

**Edition A** EA.0 EA.1 EA.2 EA.3 EA.4 EA.5 EA.6 EA.7

**Edition B** EB.1 EB.2 EB.3 EB.4 EB.5 EB.6 EB.7



**Edition A** EA.0 LA EA.1 LA EA.2 LA EA.3 LA EA.4 LA EA.5 LA EA.6 LA1 EA.6 LA3 EA.7 LA1 EA.7 LA4

**Edition B** EB.1 LA EB.2 LA EB.3 LA EB.4 LA EB.5 LA EB.6 LA1 EB.6 LA3 EB.7 LA1 EA.7 LA4

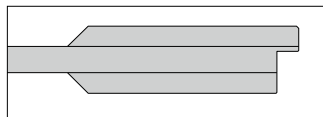


**Edition A** EA.0 SVR EA.0 SVR EA.2 SVR EA.3 SVR EA.4 SVR EA.5 SVR

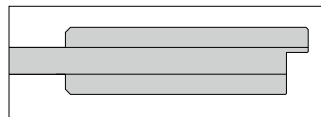
**Edition B** EB.1 SVR EB.2 SVR EB.3 SVR EB.4 SVR EB.5 SVR

## Merkmale

1. Tiefergelegte Felder
2. Profil A: schräg, 45°  
Profil B: gerade
3. Füllungsstärke 16 mm
4. Gerader Überschlag,  
Kantenradius 3 mm
5. Passende Zarge C und E

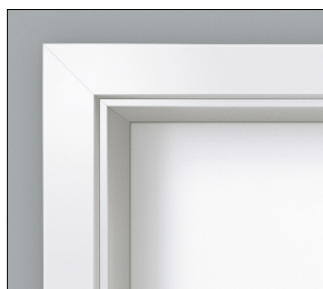


Profil **Edition A**

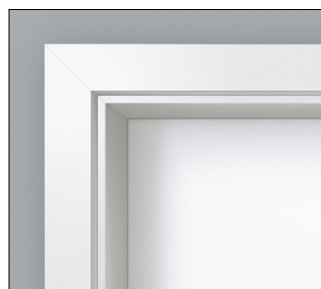


Profil **Edition B**

## Passende Zarge



Zarge C  
Bekleidungsbreite: 60 mm



Zarge E  
Bekleidungsbreite: 55 mm